

GRADE – VIII MODEL PAPER 2017

COMPUTER EDUCATION

CRQ/ ERQ Paper Marking Scheme

CRQs

Q1:

4 Marks

Enlist FOUR functions of network interface card

Possible Answer:

- i. It allows two-way communication.
- ii. It connects the computer with network
- iii. It converts and controls data on the network.
- iv. It receives and sends data on the network.

Checking Hints:

Total 4 Marks

1 mark for writing each function (4 required)

Q2:

4 Marks

What is GPS? Write THREE advantages of a GPS device.

Possible Answer:

1. The global positioning system (GPS) is a Satellite based navigation system.
2. GPS device provides direction.
3. It contains all types of maps.
4. It provides information on traffic conditions.

Checking Hints:

Total 4 marks

1 mark for definition

1 mark for writing each advantage (3 required)

Q3:

4 Marks

What is antivirus? Name any THREE antivirus software.

Possible Answer:

Computer program (software) used to prevent, detect and remove viruses (worms, adware etc).

- i. Symantic
- ii. McAfee
- iii. AVG
- iv. Avast

Checking Hints:

Total 4 Marks

1 mark for the definition

1 mark for writing each name (3 required)

Q4:

4 Marks

Enlist FOUR ways of spreading virus.

Possible Answer:

1. Infected flash drives , floppy disks (USB)
2. Email attachment
3. Surfing insecure websites
4. Installing pirated software

Checking Hints:

Total 4 Marks

1 mark for writing each way (4 required)

Q5:

4 Marks

Mention FOUR purposes of spreadsheet.

Possible Answer:

1. It is used for accounting.
2. It allows making calculations.
3. It allows sorting and rearranging data.
4. It displays numeric data as a chart or graph.

Checking Hints:

Total 4 Marks

1 mark for each purpose (4 required)

Q6:

4 Marks

Write TWO features of each: Work Book and Worksheet.

Possible Answer:

Workbook

1. Workbook is a file which saves data.
2. It contains one or more worksheets.

Worksheet

1. Worksheet is a single spreadsheet.
2. It is made up of rows and columns.

Checking Hints:

Total Marks = 4

1 mark for each point about workbook (2 required)

1 mark for each point about worksheet (2 required)

Q7:

4 Marks

Define row and column and give an example of each.

Possible Answer:

Row: Group of cells running horizontally.

Numbered 1, 2, 3, 4

Column: Group of cells running vertically.

Labelled A,B,C

Example of row: row 5

Example of column: column F

Checking Hints:

Total 4 Marks

1 mark for definition of row

1 mark for definition of column

1 mark for each example (2 required)

Q8:

4 Marks

Write down the purpose of the given flowchart symbols.

i. Parallelogram

ii. Rectangle

iii. Diamond

iv. Flow line

Possible Answer:

i. It is used to indicate the input and output operations.

ii. It is used to represent arithmetic and data processing.

iii. It is used to show the condition of decision.

iv. It is used to indicate the order in which the steps are to be formed.

Checking Hints:

Total 4 Marks

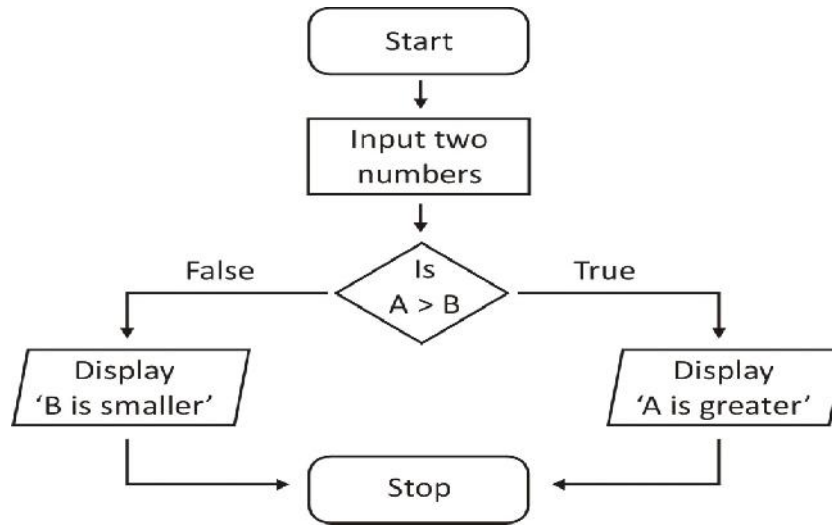
1 mark for writing one purpose of each symbol (4 required)

Q9:

4 Marks

Draw a flowchart to display the larger one out of the two numbers.

Possible Answer:



Checking Hints:

Total 4 Marks

1 mark is for start and stop

1 mark for input

1 mark for decision

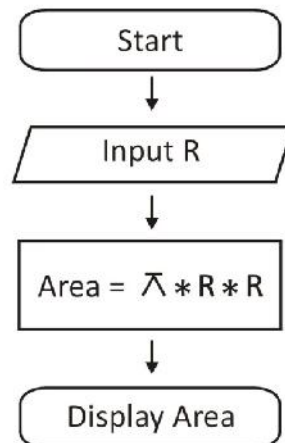
1 mark for display

Q10:

4 Marks

Draw a flowchart to find the area of a circle.

Possible Answer:



Checking Hints:

Total 4 Marks

1 mark for start and stop

1 mark for input

1 mark for calculation

1 mark for display

Q11:

4 Marks

In BASIC program, find out the sum and average for four numbers.

Possible Answer:

```
10 INPUT "Enter Any Four Numbers" ; A, B, C, D
20 LET SUM = A + B + C + D
30 LET AVERAGE = SUM /4
40 PRINT "SUM=" ; SUM
50 PRINT "AVERAGE=" ; AVERAGE
60 END
```

Checking Hints:

Total 4 marks
1 mark for input
1 mark for sum formula
1 mark for average formula
1 mark for displaying results

Q12:

4 Marks

Write the BASIC-code for the given output.

```
Enter 1st value? 2
Enter 2nd value? 4
SUM = 6
```

Possible Answer:

```
10 INPUT "ENTER 1st VALUE" ; A
20 INPUT "ENTER 2nd VALUE" ; B
30 LETS = A + B
40 PRINT "SUM =" ; S
50 END
```

Checking Hints:

Total 4 marks
1 mark for each input (2 required)
1 mark for process
1 mark for display result

ERQs

Q13:

6 Marks

Define THREE types of computer network.

Possible Answer (Hints) :

LAN

- (1) Within closed or small area.
- (2) Useful for fast sharing information and resources.

MAN

- (1) Covers a city or a large campus.
- (2) Difficult to install because it requires additional equipments.

WAN

- (1) Covers broad area like countries.
- (2) Connects to internet through telephone line.

Checking Hints:

Total 6 Marks

- 1 mark for writing each point about LAN (2 required)
- 1 mark for writing each point about MAN (2 required)
- 1 mark for writing each point about WAN (2 required)

Q14:

6 Marks

Differentiate between syntax and logical error with the help of ONE example each.

Possible Answer:

S. No.	Syntax Error	Logical Error
1	Occurs due to improper format	Occurs due to programmers carelessness
2	Caused by violation of grammatical rules of the language	Computer cannot detect the logical errors
3	Example: PRENT "RESULT=R	Example: SUM = 20 – 30

Checking Hints:

Total 6 Marks

- 1 mark for each point about syntax error (2 required)
- 1 mark for each point about logical error (2 required)
- 1 mark for each example (2 required)